

## Monthly Crime Report

### Selection: Bromsgrove Geo-type: District

- [Introduction](#)
- [Section One: Ward Comparisons](#)
- [Section Two: Electoral Division Comparisons](#)
- [Section Three: District Crime Overview](#)
- [Section Four: District Overview of Specific Crime Types](#)
- [Section Five: Crime Type and Group Information](#)

### Introduction

All data is provided by West Mercia Police. The month displayed is based upon the date on which the crime or ASB Incident was recorded.






For guidance as to which crime types are included in the various crime categories featured within this report, please see Section Five.

[^ top ^](#)

## Section One: Ward Comparisons

This section provides information at a Ward level on the volume of offences in key crime groups (Total Crime, Burglary, Violence Against the Person (VAP) with injury, Criminal Damage and Vehicle Crime) and Anti-Social Behaviour. Crimes and ASB Incidents are assigned to a ward based on the specific geographical reference provided, but this is not always possible, e.g. where this reference is missing. Therefore the sum of ward totals may not equal the total for the district.

The following table shows a breakdown of the number of offences per ward for key crime groups in Jan-2015

	 Burglary	 Criminal Damage	 Vehicle Crime	 VAP with Injury	 Total Crime
Alvechurch	1	3	7	1	21
Beacon	0	1	0	0	3
Catshill	4	7	5	5	25
Charford	3	4	4	1	32
Drakes Cross and Walkers Heath	5	2	2	2	30
Furlongs	2	1	1	2	10
Hagley	2	1	3	1	15
Hillside	4	0	9	0	17
Hollywood and Majors Green	1	2	12	0	19
Linthurst	2	0	0	1	3
Marlbrook	2	1	4	0	12
Norton	0	0	2	0	9
St Johns	5	5	4	5	41
Sidemoor	5	4	3	3	27
Slideslow	4	1	3	0	12
Stoke Heath	1	1	0	1	3
Stoke Prior	6	1	0	4	15
Tardebigge	2	0	1	1	13
Uffdown	2	2	2	0	13
Waseley	0	3	2	1	19
Whitford	0	3	3	0	11
Woodvale	2	0	0	0	6
Wythall South	1	1	5	0	16
Worcestershire	299	374	308	282	2623

The following table shows a breakdown of the number of Anti-Social Behaviour Incidents reported per ward in Jan-2015 with the data shown as a rate per 1000 population and as a whole number of incidents.

	ASB Incident Rate	ASB Incidents
Alvechurch	1.500	10
Beacon	0.960	2
Catshill	2.660	12
Charford	3.310	22
Drakes Cross and Walkers Heath	1.200	6
Furlongs	1.630	7
Hagley	0.410	2
Hillside	1.890	9
Hollywood and Majors Green	0.230	1
Linthurst	0.840	2
Marlbrook	1.430	6
Norton	1.590	8
St Johns	11.340	57
Sidemoor	2.320	12
Slideslow	1.290	7
Stoke Heath	1.690	4
Stoke Prior	2.880	6
Tardebigge	0.300	1
Uffdown	0.880	2
Waseley	1.130	5
Whitford	1.430	7
Woodvale	3.700	8
Wythall South	1.230	3
Worcestershire	2.530	1440

Note: As of June 2013 ASB no longer includes 'Hoax Calls'

[^ top ^](#)

## Section Two: Electoral Division Comparisons

The following table shows a breakdown of the number of offences per electoral division for key crime groups in Jan-2015

	Burglary	Criminal Damage	Vehicle Crime	VAP with Injury	Total Crime
Alvechurch	2	4	12	1	37
Beacon	4	4	11	1	39
Bromsgrove Central	5	5	6	5	50
Bromsgrove East	8	1	4	2	28
Bromsgrove South	10	6	4	6	50
Bromsgrove West	5	7	6	3	38
Clent Hills	6	4	6	3	38
Woodvale	8	8	9	5	43
Wythall	6	4	14	2	49
Worcestershire	299	374	308	282	2623

The following table shows a breakdown of the number of Anti-Social Behaviour Incidents reported per electoral division in Jan-2015 with the data shown as a rate per 1000 population and as a whole number of incidents.

	ASB Incident Rate	ASB Incidents
Alvechurch	1.470	13
Beacon	1.400	16
Bromsgrove Central	6.650	65
Bromsgrove East	0.890	10
Bromsgrove South	2.980	32
Bromsgrove West	1.940	19
Clent Hills	0.960	11
Woodvale	2.370	26
Wythall	0.760	7
Worcestershire	2.530	1440

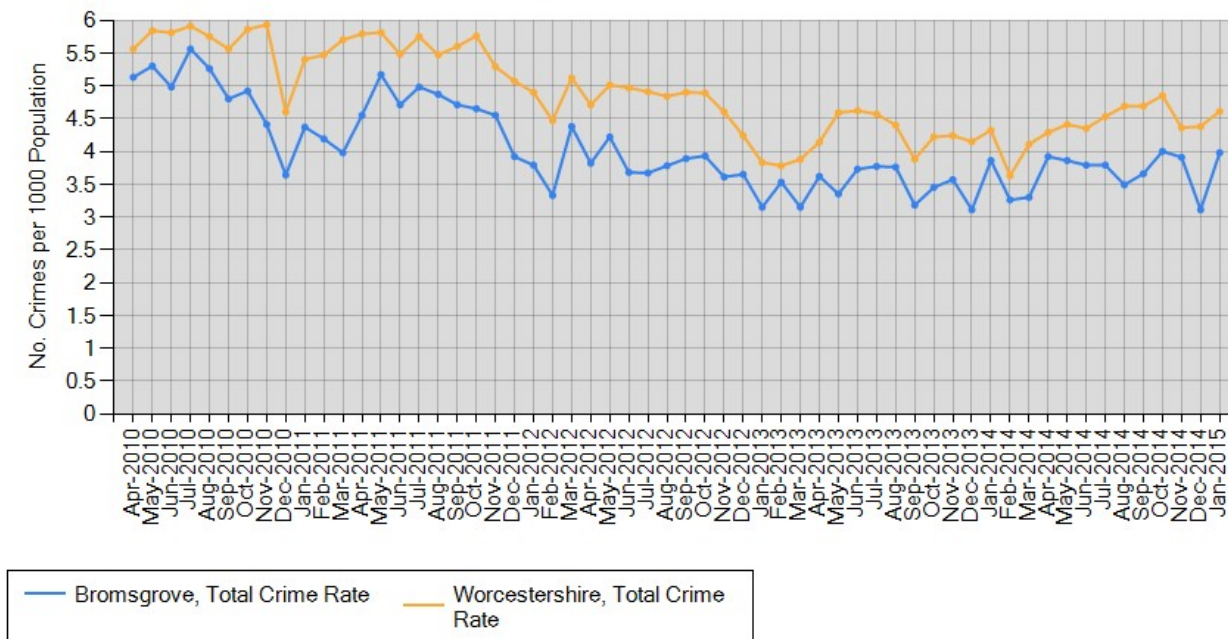
Note: As of June 2013 ASB no longer includes 'Hoax Calls'.

[^ top ^](#)

## Section Three: District Crime Overview

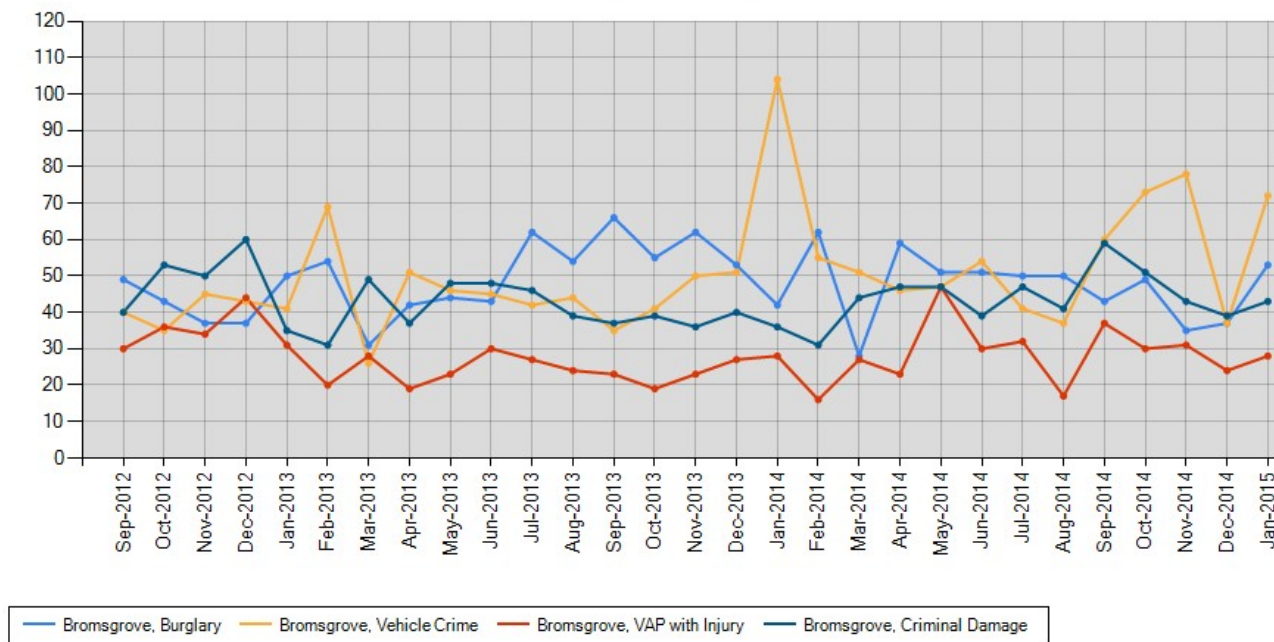
This section provides information at a District level, on the volume and trend of the key crime groups: Total Crime, Burglary, Violence Against the Person (VAP) with Injury, Criminal Damage and Vehicle Crime

**Chart 1: Monthly District and County Crime Rate**



The above chart can be used to compare the trend in the crime rate in the District to that of the County.

**Chart 2: Key Crime Groups Trend**



The above chart shows the trend in volume over time for some key crime groups in the District as a whole.

The following table shows the District rate per 1000 population and number of offences (in brackets) in Jan-2015 for these crime groups, as well as the County rate for comparison.

Table 5: District rate and number of offences		
	Bromsgrove	Worcestershire
Burglary Rate	0.560 (53)	0.530 (299)
Criminal Damage Rate	0.460 (43)	0.660 (374)
Vehicle Crime Rate	0.760 (72)	0.540 (308)
VAP with Injury Rate	0.300 (28)	0.500 (282)
Total Crime Rate	3.980 (375)	4.610 (2,623)

[^ top ^](#)

## Section Four: District Overview of Specific Crime Types

The following table shows information on a range of crime types, including a more detailed breakdown of the crime types which make up the key crime groups outlined above - for example, where as the volume and trend for "Burglary" as a whole is shown above, in the table below, you can see the proportion made up of Dwelling and Non-Dwelling offences. Information is displayed at a district level as the number of offences at a ward level is generally too small to provide any valuable insight. Data is shown for the latest six months.

Table 6: Number of Offences per month in the District, key offence types						
	Aug-2014	Sep-2014	Oct-2014	Nov-2014	Dec-2014	Jan-2015
<b>Non-Dwelling Burglary</b>						
Bromsgrove	19	30	29	19	19	29
<b>Dwelling Burglary</b>						
Bromsgrove	31	13	20	16	18	24
<b>Theft from Motor Vehicle</b>						
Bromsgrove	29	47	59	65	30	55
<b>Theft of Motor Vehicle</b>						
Bromsgrove	8	13	14	13	7	17
<b>Drug Offences</b>						
Bromsgrove	33	19	25	21	23	24
<b>Robbery</b>						
Bromsgrove	1	0	0	5	0	5
<b>Shoplifting</b>						
Bromsgrove	38	11	16	28	18	19
<b>Serious Sexual Offences</b>						
Bromsgrove	6	5	7	6	5	4
<b>Assault without injury</b>						
Bromsgrove	28	18	22	26	40	42
<b>Criminal Damage</b>						
Bromsgrove	41	59	51	43	39	43
<b>Total Crime</b>						
Bromsgrove	329	345	377	369	293	375
<b>ASB Incidents</b>						
Bromsgrove	250	256	204	196	200	199

Note: As of June 2013 ASB no longer includes 'Hoax Calls'. Also, as of July 2013 the definition of VAP without injury has changed to include more categories of VAP.

If you require any further information on crime and ASB trends, or if you have any comments or questions about the above information, please feel free to contact the CSP Analyst:

Worcestershire:  
ncaswell@worcestershire.gov.uk

[^ top ^](#)

## Section Five: Crime Type and Group Information

The following provides some guidance as to which crime types are included in the various crime categories featured within this report.

**Total Crime:** total recorded crime

**Burglary:** burglary offences (including attempts) both in a dwelling and a non-dwelling

**Criminal Damage:** including arson and damage to a dwelling, to a non-dwelling, to other property and to a vehicle

**Vehicle Crime:** including theft from a motor vehicle, theft of a motor vehicle and vehicle interference

**Violence Against the Person (VAP) with Injury:** including assault with less serious injury (or ABH) and most serious violence

**Anti-Social Behaviour (ASB):** All OIS incidents recorded with an ASB result code

**Drug Offences:** Possession or trafficking of drugs

**Robbery:** including robbery of business and personal property

**Serious Sexual Offending:** including rape and sexual assault

**Assault without injury:** common assault including common assault against a PC

**Most Serious Violence:** including murder, attempted murder, manslaughter, causing death by dangerous or careless driving, wounding and grievous bodily harm

[^ top ^](#)